



Combined
data sheet
WML-300

300W LEADING EDGE PLUGGABLE DIMMER FOR USE WITH RAK8-MB



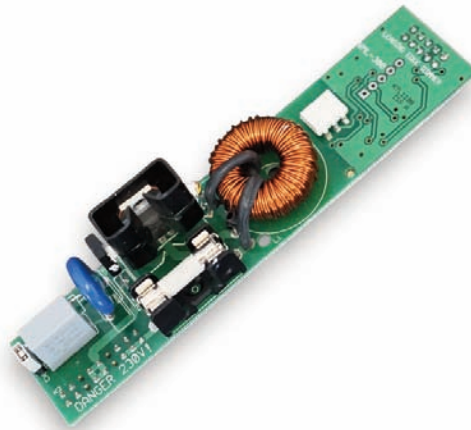
WHAT IS IT ?

A pluggable leading edge dimmer module to be used with the RAK8-MB.

The unit is plugged directly into one of the slots on the RAK8-MB.

The WML-300 can be used in combination with any of the other modules compatible with the RAK8 allowing for greater flexibility during both specification and installation.

The WML-300 pluggable module is suitable for Tungsten, Low Voltage Halogen and other leading edge dimmable loads.



The WML-300 combines with the RAK8-MB to provide a centralised lighting control system that can integrate with either wireless or wired Rako products.

The WML-300 is compatible with all leading edge dimmable loads such as incandescent mains voltage lamps, leading edge dimmable transformers and leading edge dimmable cold cathode fittings. If the load is inductive (any form of wire-wound transformer) the WML-300 must be used as they will damage trailing edge dimmers.

As with all RAK8 pluggable modules no memory is stored on the WML-300. All programming is stored on the motherboard meaning the WML-300 can be swapped with any other module without the need to be re-programmed.

For other fitting types please refer to the datasheet for:

WMT-400

WDA-600

WMS-600



Combined

data sheet

WML-300

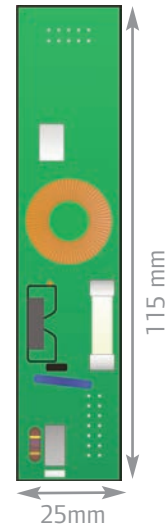
300W LEADING EDGE PLUGGABLE DIMMER FOR USE WITH RAK8-MB



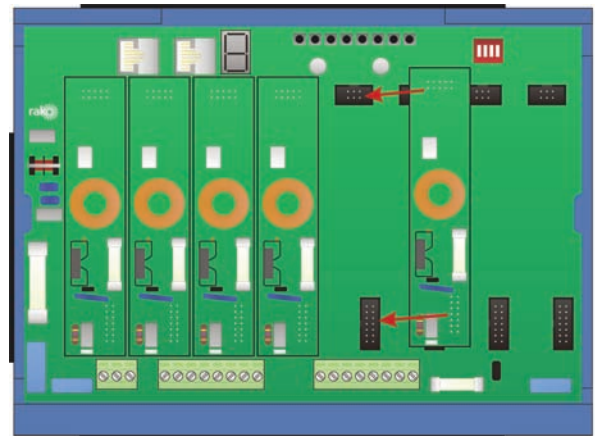
technical data

dimensions	115x25x28mm
maximum loading	300W
minimum loading	20W
weight	50g
climate range	Temperature +2C to +40C Humidity +5% to 95% non condensing
standards	Emissions - EN61000-6-3 : 2001 Immunity - EN61000-6-1 : 2001
communication	RS485 to other RAKs, RX-link and RAK-Link
connections	Pluggable module

mechanical data



connection details



telephone +44 (0) 1634 226666 fax +44 (0) 1634 226667 www.rakocontrols.com